



## REQUEST FOR PROPOSALS

for Trail Construction Project

Spring/Summer 2019

---

The Superior Hiking Trail Association seeks proposals from individuals and businesses with expertise and extensive experience in constructing new hiking trail according to modern, sustainable construction techniques and standards, including, but not limited to: clearing; building tread; installing puncheon, boardwalk, and bridges; using local, on-site stone to build retaining walls and other trail improvement features and harden tread.

### **About the Project**

Pincushion Mountain Recreation Area (PMRA) sits right above the popular town of Grand Marais, MN overlooking Lake Superior. The PMRA is a has long been a destination for cross-country skiing, hiking, and more recently, mountain biking. The Superior Hiking Trail (SHT) passes through the PMRA, with a short spur to the overlook at Pincushion Mountain, before it leaves the PMRA as it descends into the Devil Track River valley to the east. For years, the SHT has followed an existing cross-country ski trail, but increased use in recent years, especially in winter, have led to user conflicts. In the spring of 2018, a new route for the SHT was flagged. It is approximately 2.5 miles in length and is mostly on federal land

managed by the US Forest Service, with a small portion on county land. Terrain is pretty flat, with an average cross-slope of less than 10%. Forest type is mainly boreal, with some northern hardwoods mixed in. Soils are clayey and poorly drained with lots of rock, with some exposed bedrock and rock outcropping present. There are a few small stream crossings. We want the trail to be built with a finished tread width of 32", full-bench construction, with a cleared corridor width of approximately 36" on either side of the center of the trail. Trail can be roughed in with machinery, not to exceed 48" in width, but must be finished with a hand crew. At this time, about one-half mile of the corridor has been cleared. We anticipate clearing more in the spring, but due to protected status of the northern long-eared bat, no cutting of trees greater than 3" can occur between June 1-July 31. Exact number and length of puncheon/boardwalk needed has not yet been determined. This will have to be determined, by the contractor or SHT staff, prior to start of project.

### **About the Superior Hiking Trail**

The Superior Hiking Trail was conceived in the mid-1980s by state and federal resource agency officials and North Shore tourism business owners. They imagined a natural footpath paralleling Lake Superior's North Shore (in Minnesota) and running from Grand Marais on the east to Two Harbors on the west. The trail got built thanks to the dedication of a few resource agency employees, the contributions of thousands of hours of volunteer labor, a \$1 million + investment by Minnesota's Legislative Council on Minnesota Resources (now known as LCCMR), and continuing support of thousands of members and donors.

By the early 2000s, the ambition of the Superior Hiking Trail Association, which manages the Trail, expanded the concept and reality of the SHT through and beyond the city of Duluth to the Minnesota-Wisconsin state line, and to the Canadian border. Today, the SHT is a 310-mile continuous natural footpath boasting another 40 miles of spurs and loops and 94 campsites. It is used by an estimated 100,000 people per year, from through-hikers taking on a life experience to dog-walkers in Duluth and tough-minded runners pursuing ultra-marathons.

Even though nearly 90% of the SHT is on public land, the Superior Hiking Trail Association is fully responsible for the Trail's maintenance, upkeep and development. It was founded in 1986, has an annual budget of about \$600,000, and has 4 full time and 2 part time staff, and two seasonal trail maintenance technicians under contract.

### **Proposal Requirements**

**Proposers should have experience/be able to provide the following:**

- Contractor must be able to demonstrate expertise working within an environmentally sensitive area and in the construction of natural-surface trails in similar setting and under similar specifications.
- Contractor must demonstrate experience constructing boardwalk or puncheon with dimensional lumber and working with native stone.
- Contractor should have extensive knowledge in the design, construction and maintenance of natural-surface trails and have the ability to diagnose problems and recommend solutions.

- Contractor must demonstrate experience with the following tools and equipment, if applicable:

Mini Dozer

Mini Excavator

Mini Crawler Carriers

Felling, Bucking and Limbing with a Chainsaw

Rigging and Highline Setup and Operation

- Contractor and all personnel using a chainsaw must have current chainsaw safety training certificate through the USFS Chainsaw Safety Training or equivalent.
- Contractor and all personnel must have current First Aid and CPR training certificate from the American Red Cross or equivalent.
- Contractor must submit an Environmental and Safety Management Plan with bid.
- It is likely that volunteers will be involved with this project in some capacity; contractor must be willing to work with or supervise volunteers.

**Please include with your proposal the following information:**

- Cost estimates for the project, broken down into materials, labor, travel and lodging.
- Your availability, or potential start date.
- Your qualifications for constructing a trail of this kind and your past experience building and maintaining hiking trails or other recreational trails, including creating accurate cost estimates.
- Documented evidence (photos, organizational newsletters or other material) of trail construction or repair projects you have overseen or participated in.
- At least two references from customers of your work. (If you work for a nonprofit organization, please provide testimonials or references from volunteers who have worked with you.)
- A list of all equipment (make, model, year and width) that will be used on this project must be submitted with bid for approval.
- A list of all equipment operators with hours of experience on each piece of equipment must be supplied with bid.

**PLEASE SUBMIT YOUR PROPOSAL NO LATER THAN March 30, 2019. If your proposal is selected, contract details can be made final following your on-site review of the project, if needed.**

**Send Proposal, or questions to:**

Tamer Ibrahim, Trail Operations Director

Superior Hiking Trail Association

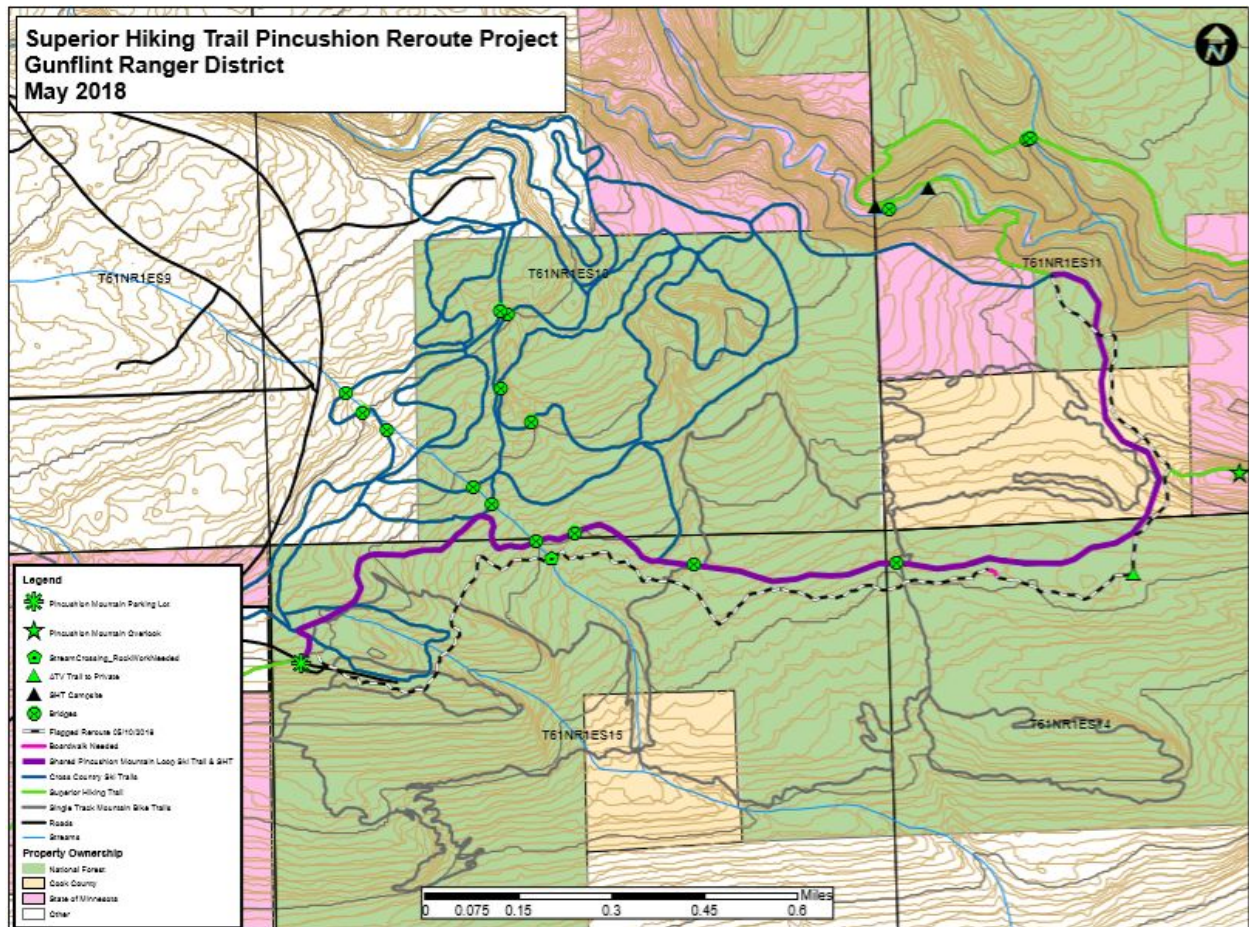
[tbrahim@superiorhiking.org](mailto:tbrahim@superiorhiking.org)

218-370-8393

This project is funded in part by a grant from the [Federal Recreational Trail Program](#) through the Minnesota Department of Natural Resources.

**Appendix:**

**Project Map**



New reroute: black and white dashed line

Current shared SHT/ski trail: purple

Ski trails: blue

Mountain bike trails: gray